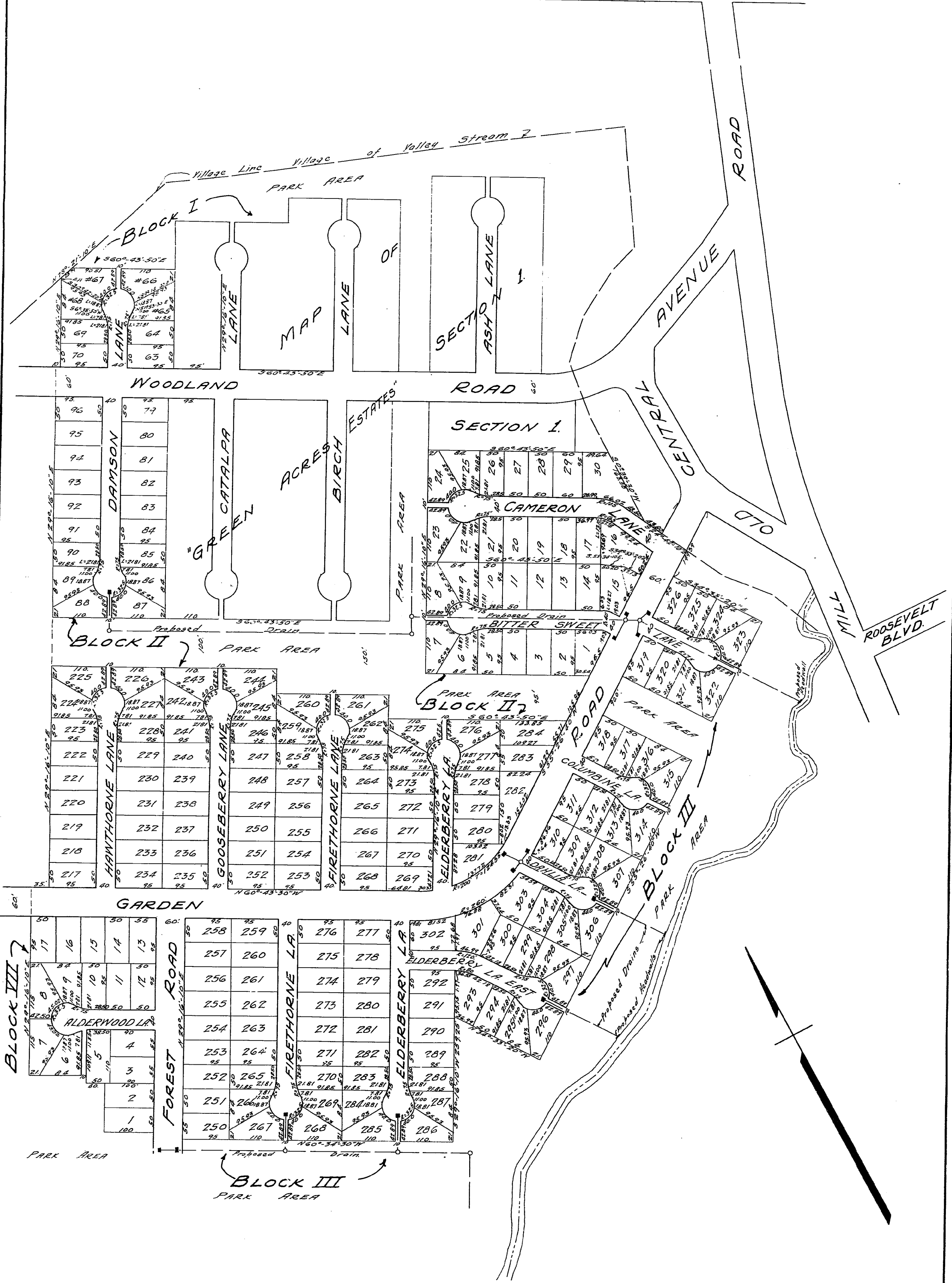


NO 3750 GREEN ACRES ESTATES SEC. 2
 TOWN OF HEMPSTEAD
 FILED FEB. 23 1937

SUNRISE HIGHWAY



APPROVED
J. G. Christ COUNTY ENGINEER.

APPROVED
Carroll W. McLaughlin TOWN ENGINEER

APPROVED FOR THE TOWN
 OF HEMPSTEAD
 Dated: _____

No. _____
 Chairman Hempstead
 Planning Board

768 July 16 37
Carroll W. McLaughlin
 CIVIL ENGINEER

MAP OF
 GREEN ACRES ESTATES, INC.

SECTION No. 2

SITUATE AT

TOWN OF HEMPSTEAD, NASSAU COUNTY, N.Y.

SCALE - 1"=100'

CARROLL W. McLAUGHLIN

FEB. 3

CIVIL ENGINEER

1937

HEMPSTEAD, N.Y.

I hereby certify that this map was made
 from an actual survey completed April 1, 1936.

Carroll W. McLaughlin
 CIVIL ENGINEER